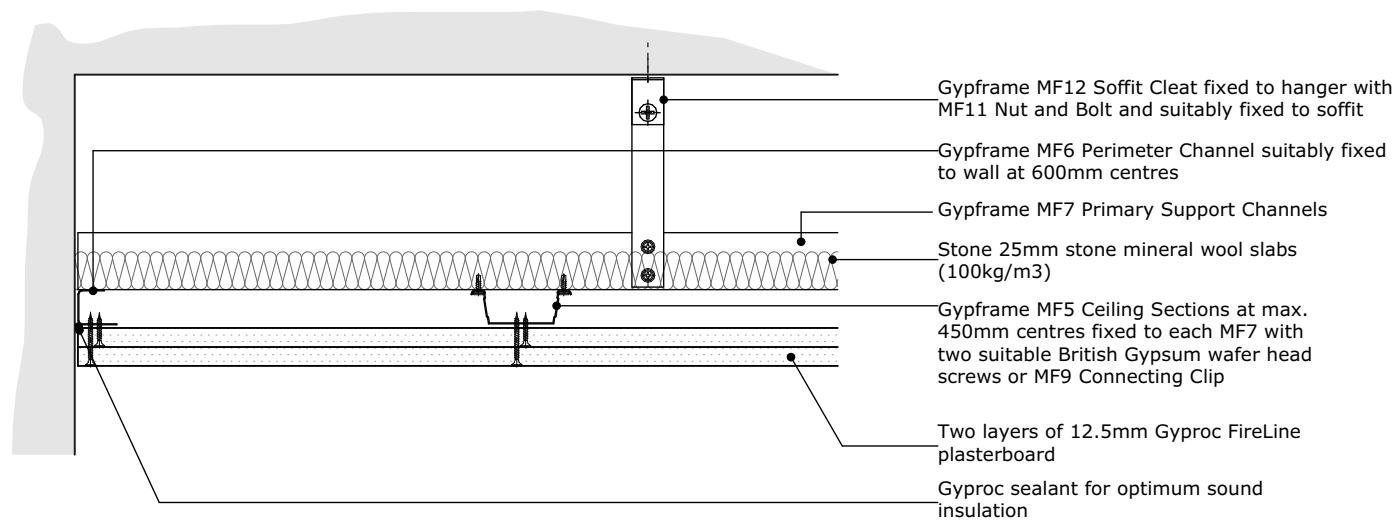


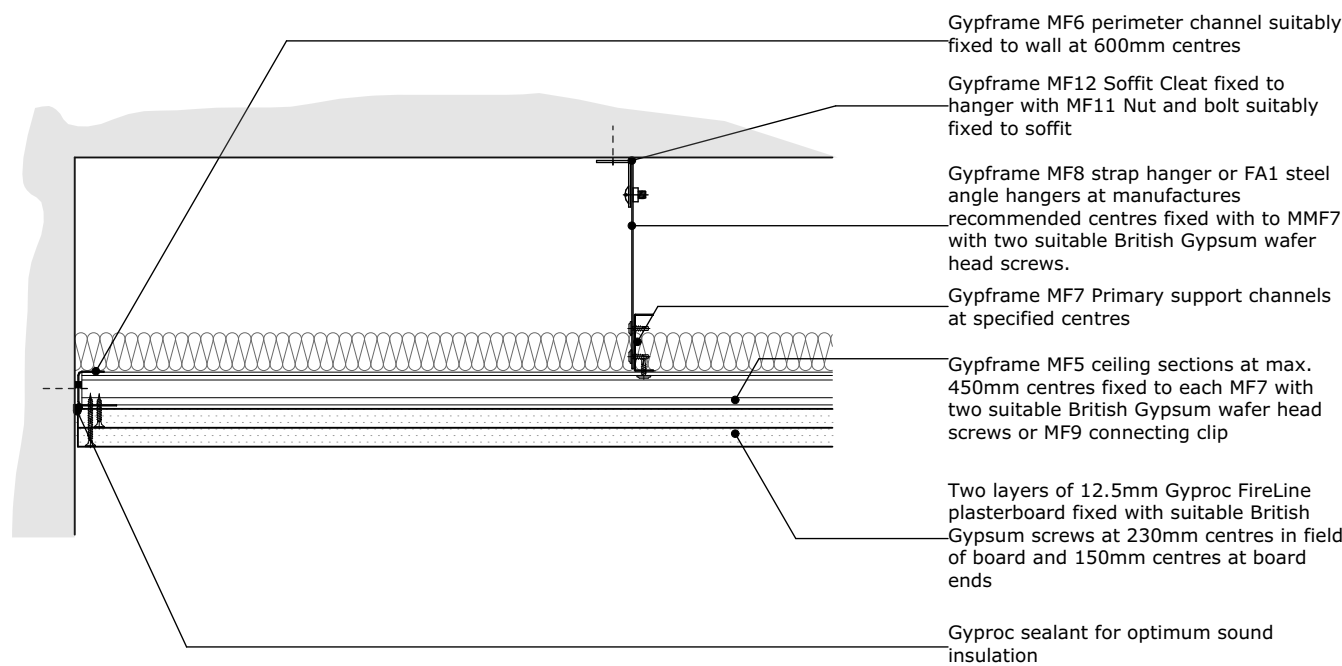
Typical Ceiling Details

GypCeiling MF C106046



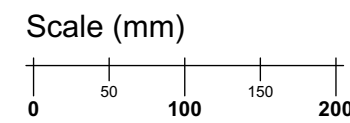
Perimeter Detail 1.

Fire integrity and insulation 30 minutes
Scale: 1:5

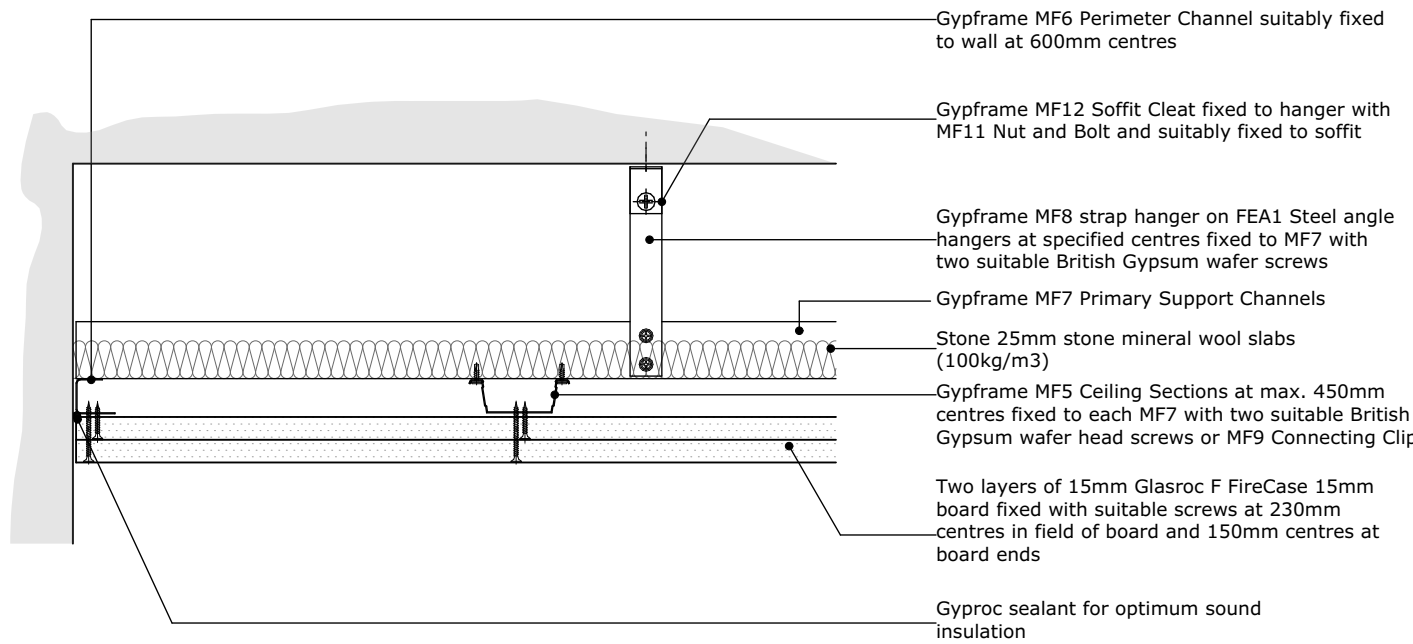


Perimeter Detail 2.

Fire integrity and insulation 30 minutes
Scale: 1:5

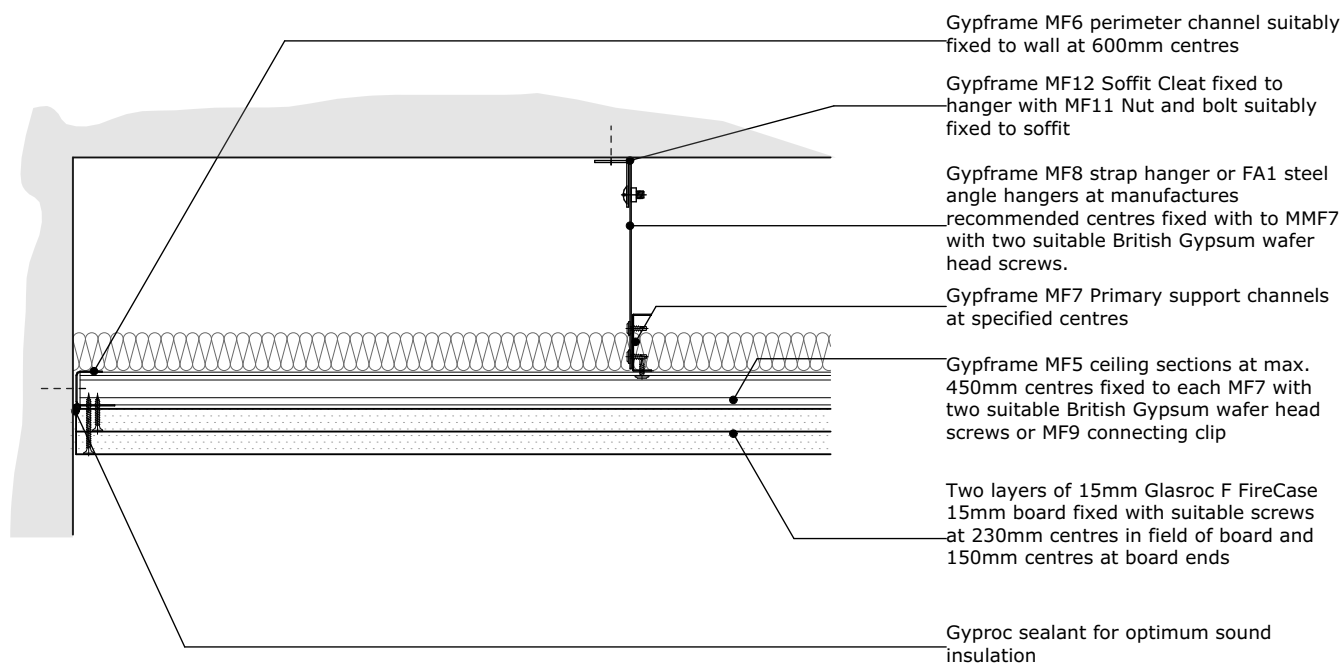


GypCeiling MF G106040



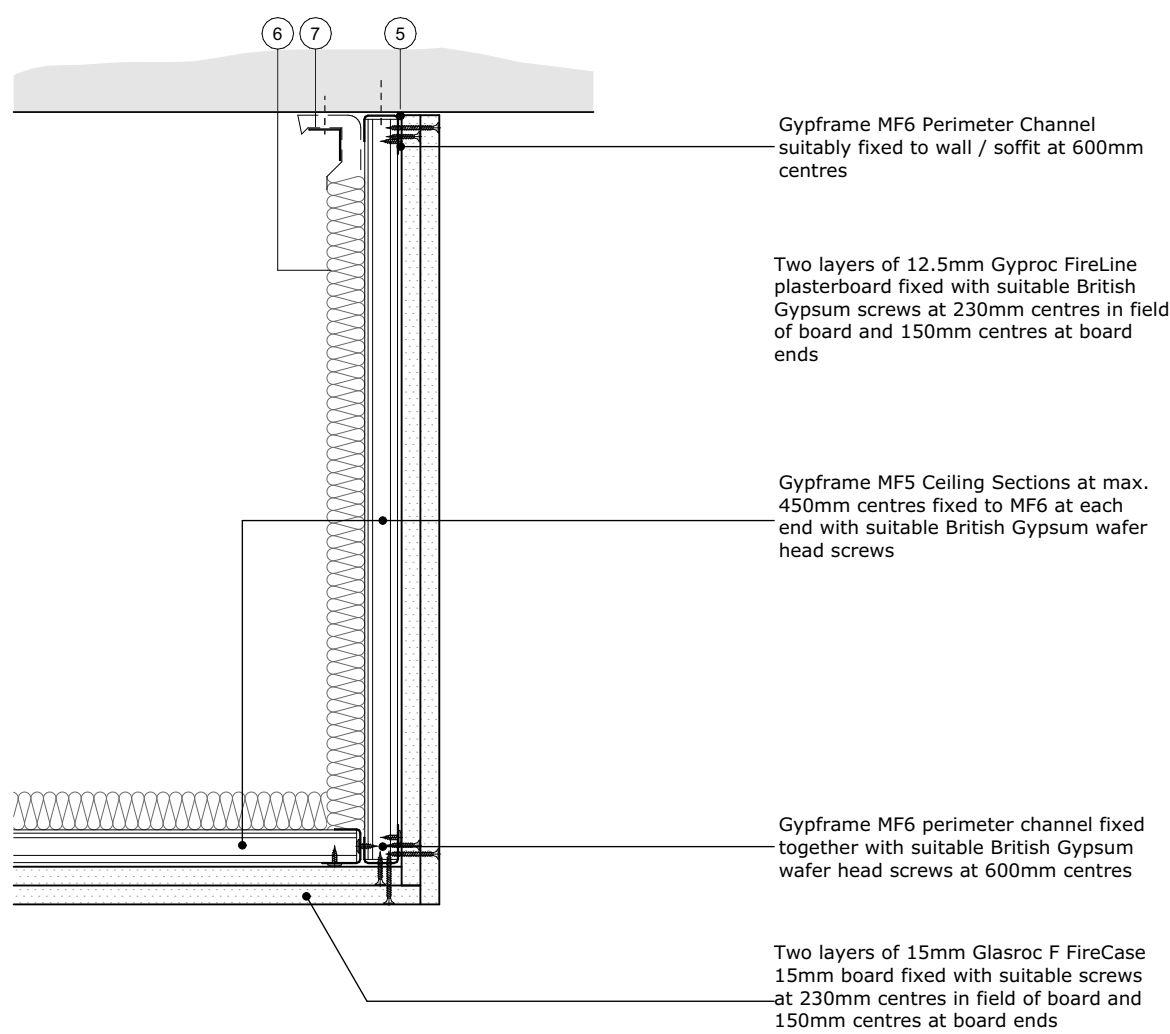
Perimeter Detail 1.

Fire integrity and insulation 60 minutes
Scale: 1:5



Perimeter Detail 2.

Fire integrity and insulation 60 minutes
Scale: 1:5



Bulkhead Detail

Fire integrity and insulation 60 minutes
Scale: 1:5

Disclaimer: brp architects ltd. accept no responsibility for work not undertaken fully in accordance with the contents of this drawing and related specifications. This document and its design content is copyright protected ©. It shall be read in conjunction with all other associated project information including models, specifications, schedules and related consultants documents. Do not scale from documents. All scales noted correct at original paper size. All dimensions to be checked on site. Immediately report any discrepancies, errors or omissions on this document to the originator. If in doubt ask.

Source File:
A77-6 26 Action Homeless Leicester 20231017 Onwards.pln

Rev	Date	Drawn	Note
-----	------	-------	------



1 Millers Yard
Roman Way
Market Harborough
Leicestershire
LE16 7PW

t : 01858 464986
brp-architects.com

Client

Action Homeless

Project Title

Proposed Alterations
Mayfield House, St James Terrace /
Mayfield Road,
Leicester

Drawing Tip

Typical Ceiling Details

Drawing Status

Tender

Scale(s): 1:5		Original Paper Size: A1
Drawn By KRJ	Checked By (File copy only)	Date 25.06.2024

Document Reference:

A77-BRP-00-XX-DR-A-5005-T01